



Bloomhall Road, Upper Norwood SE19

£495,000 Freehold

3 bedroom terraced house for sale

Description

Charming three bedroom mid-terrace property, in need some improvement, situated in a quiet residential road of similar properties within brief walking distance of Norwood Park recreation ground and a short distance of Crystal Palace. Gipsy Road shopping amenities and Gipsy Road rail station are also within brisk walking distance. The accommodation comprises a lounge, a large kitchen/breakfast room, and a ground floor to the ground floor, together with three bedrooms and bathroom/WC t to the first floor. This rather nice property further benefits from double glazing, gas central heating and an 80ft rear garden.

Tenure: Freehold

Tenure

Freehold

Bloomhall Road, London, SE192UD

Approximate Gross Internal Area = 80.5 sq m / 866 sq ft

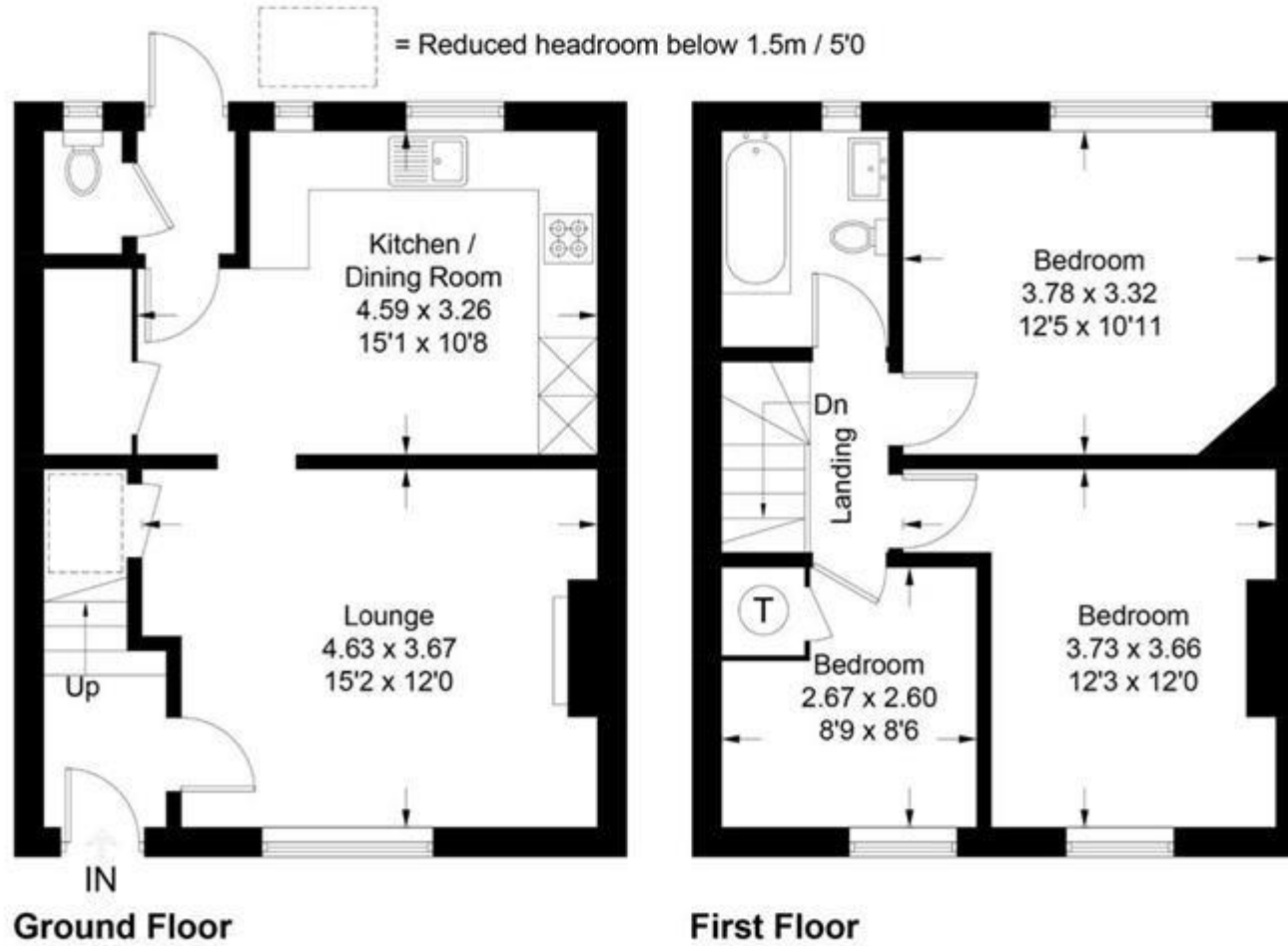


Illustration for identification purposes only, measurements are approximate,
not to scale. floorplansUsketch.com © (ID761221)

Energy Efficiency Rating

	Current	Potential
<i>Very energy efficient - lower running costs</i>		
(92-100) A		
(81-91) B		87
(69-80) C		
(55-68) D	67	
(39-54) E		
(21-38) F		
(1-20) G		

Viewing by appointment only

Southpoint (London) Limited - Head Office

421 Beulah Hill, London SE19 3HB

Tel: 02087611828 Email: simon@simonward.london Website: